

# FORA<sup>®</sup> MD6

福爾旗艦6合1測試系統  
Multi-Functional Monitoring System

## 簡易使用指南



**iFORA HM**  
Healthcare by ForaCare.



藍牙操作說明影片

福爾係經美商Fora Care Inc.監製，  
並授權商標使用與販售。  
福爾台灣網址: [www.foracare.com.tw](http://www.foracare.com.tw)  
客戶服務專線: 0809-007-868  
[週一~週五 09:00-12:00 | 13:30-18:00]  
其他時間，請聯繫您的醫療保健專業人士取得協助。



315-4172200-002



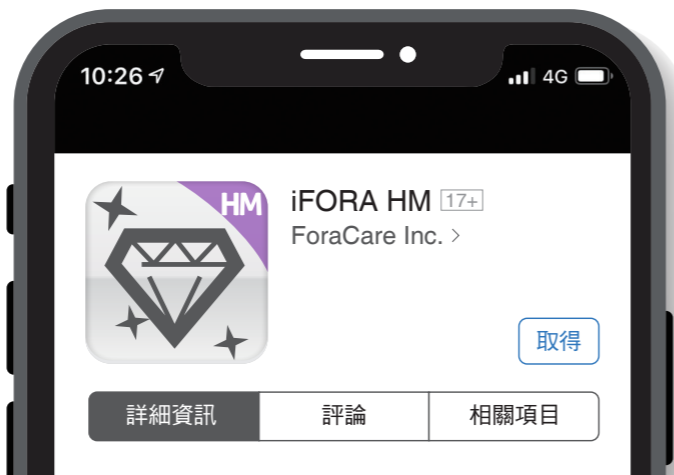
## 下載與安裝 APP



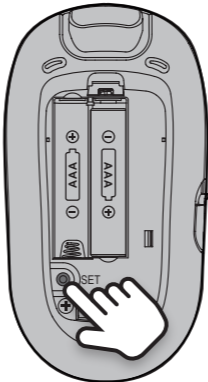
Apple and the Apple logo are trademarks of Apple Inc.

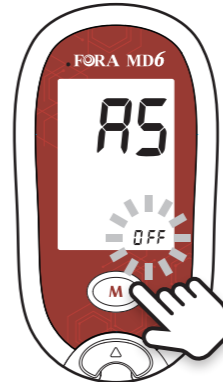


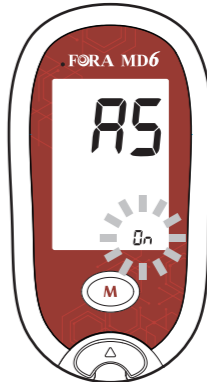
Google Play and the Google Play logo are trademarks of Google LLC.

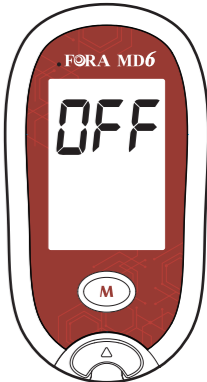



## 藍牙開啟

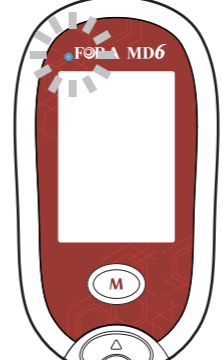
- 


1. 請先開啟自動傳輸功能，按SET鍵直到螢幕出現AS(自動傳輸)
- 

2. 按M鍵選擇On(On開啟;Off關閉)
- 

3. 按M鍵選擇On(On開啟;Off關閉)
- 

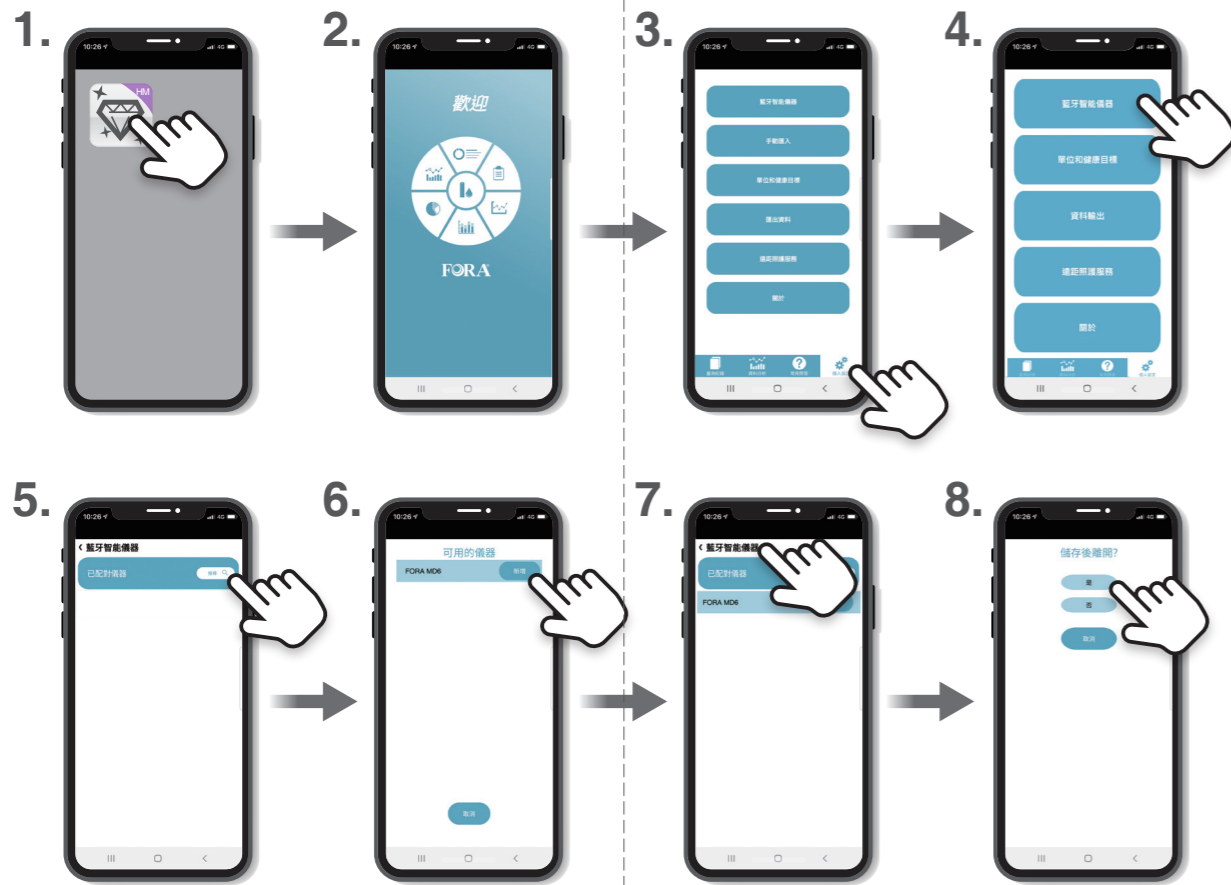
4. 按下SET鍵完成設定，儀器將立即自動關機。
- 

5. 按M鍵選擇On(On開啟;Off關閉)
- 

6. 按M鍵選擇On(On開啟;Off關閉)
- 

7. 按M鍵選擇On(On開啟;Off關閉)

## 藍牙配對



## 資料傳輸

